

Stratum Lot  
**3**

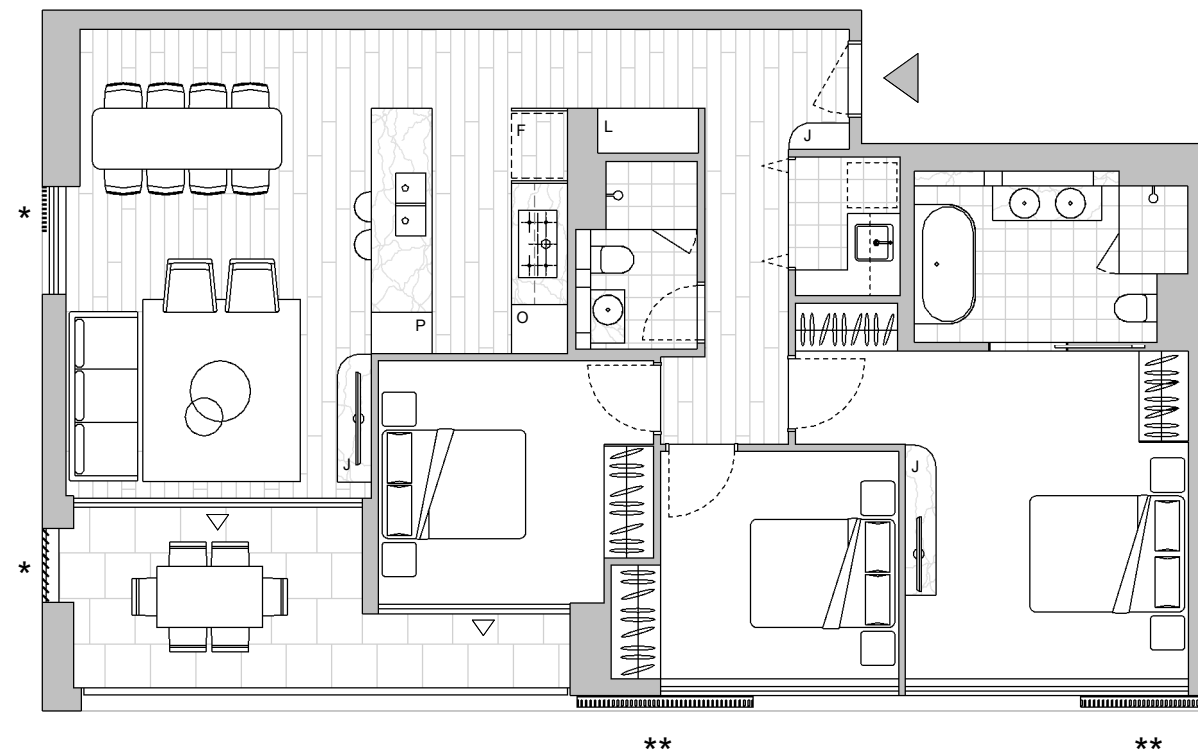
Colour Scheme: Premium C  
Floor Finish: Timber

Strata Lot  
**32**

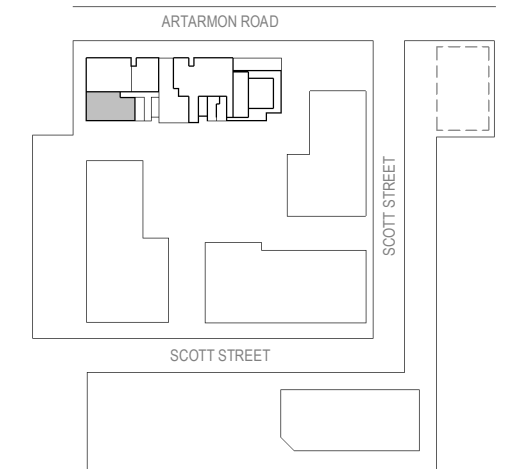
### THREE BEDROOM APARTMENT

Unit Area 104 m<sup>2</sup>  
Balcony Area 12 m<sup>2</sup>  
Total Area 116 m<sup>2</sup>

Areas subject to final survey. Area includes balcony, winter garden and courtyard where applicable. Area excludes associated parking and external storage areas.



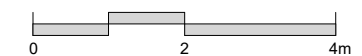
**LEVEL 5**



Legend - As Applicable

- |                   |             |            |
|-------------------|-------------|------------|
| ▲ Access          | F Fridge    | J Joinery  |
| △ Balcony Access  | P Pantry    | L Linen    |
| ** Sliding Screen | O Wall Oven | St Storage |
| * Fixed Screen    |             |            |

Provision of a water point, GPO (power point) and gas point has been made available to the balcony.



This floor plan was produced prior to construction and while the information contained herein is believed to be correct it is not guaranteed. Changes will undoubtedly be made in accordance with the contract for sale. The plan does not show additional features such as hot water systems, services, or Bulkheads necessary for services. Dimensions, areas, and scale of floor plans are approximate only and subject to the terms of the Contract. Areas calculated in accordance with the Strata Schemes Development Act 2015. The furniture and furnishings depicted are not included with any sale. Purchasers must refer to the contract for sale for the list of inclusions. Furnishings should not be taken to indicate the final position of power points, TV connection points and the like. All graphics, including design and extent of tile/paver/carpet areas, landscaping, balustrades, louvres, sun shading devices, privacy screens and services equipment are for illustrative purposes only and are not to be relied on as a representative of the final product. Plans do not show additional features within each lot such as letterboxes and side and rear retaining walls. All level changes in the courtyards may not have been shown.

Stratum Lot  
**3**

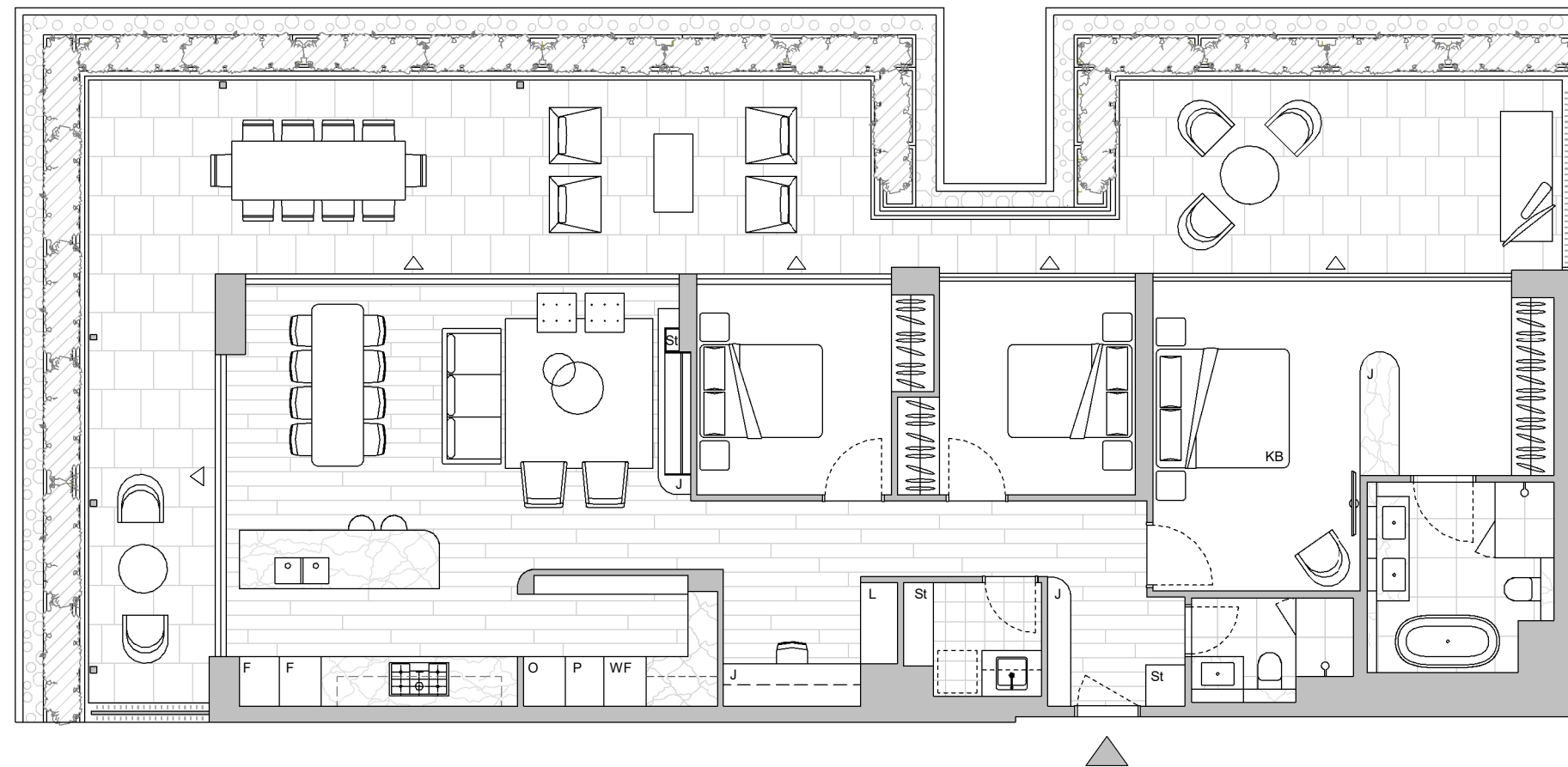
Strata Lot  
**38**

Colour Scheme: Penthouse  
Floor Finish: Timber

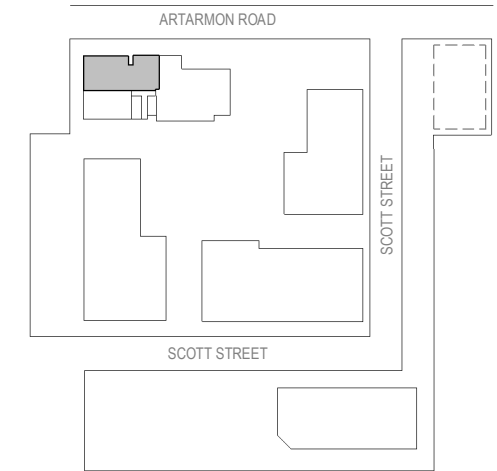
**THREE BEDROOM PENTHOUSE  
APARTMENT**

Unit Area 128 m<sup>2</sup>  
Balcony Area 73 m<sup>2</sup>  
Total Area 201 m<sup>2</sup>

Areas subject to final survey. Area includes balcony, winter garden and courtyard where applicable. Area excludes associated parking and external storage areas.



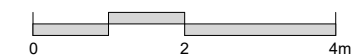
**LEVEL 6**



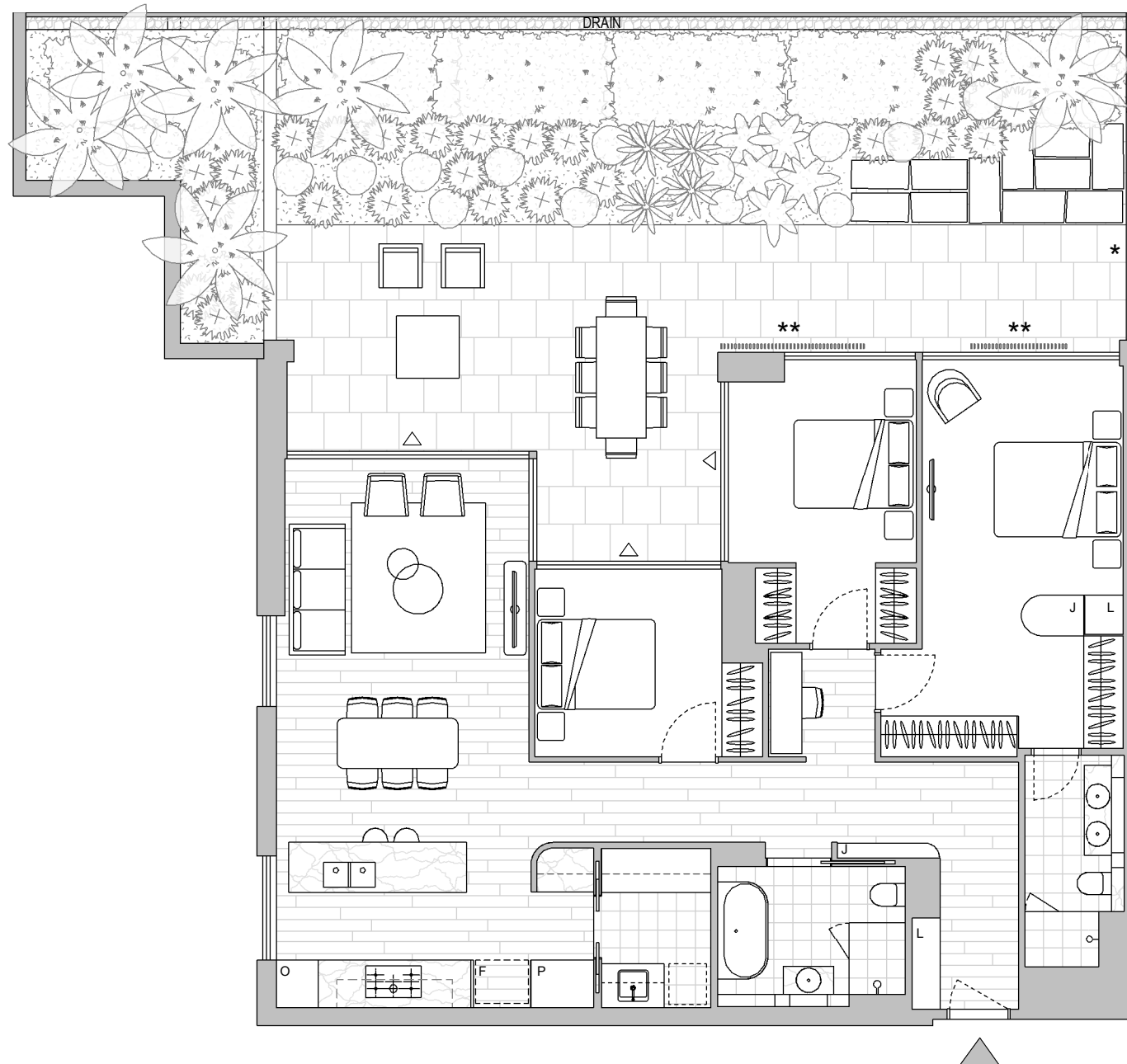
Legend - As Applicable

- |                             |                |            |
|-----------------------------|----------------|------------|
| ▲ Access                    | F Fridge       | J Joinery  |
| △ Balcony Access            | O Wall Oven    | L Linen    |
| ** Sliding Screen           | WF Wine Fridge | P Pantry   |
| * Fixed Screen              | KB King Bed    | St Storage |
| ▨ Planting maintained by OC | ☐ Pebbles      | ▨ Vergola  |

Provision of a water point, GPO (power point) and gas point has been made available to the balcony.



This floor plan was produced prior to construction and while the information contained herein is believed to be correct it is not guaranteed. Changes will undoubtedly be made in accordance with the contract for sale. The plan does not show additional features such as hot water systems, services, or Bulkheads necessary for services. Dimensions, areas, and scale of floor plans are approximate only and subject to the terms of the Contract. Areas calculated in accordance with the Strata Schemes Development Act 2015. The furniture and furnishings depicted are not included with any sale. Purchasers must refer to the contract for sale for the list of inclusions. Furnishings should not be taken to indicate the final position of power points, TV connection points and the like. All graphics, including design and extent of tile/paver/carpet areas, landscaping, balustrades, louvres, sun shading devices, privacy screens and services equipment are for illustrative purposes only and are not to be relied on as a representative of the final product. Plans do not show additional features within each lot such as letterboxes and side and rear retaining walls. All level changes in the courtyards may not have been shown.



LEVEL 2

Stratum Lot  
3

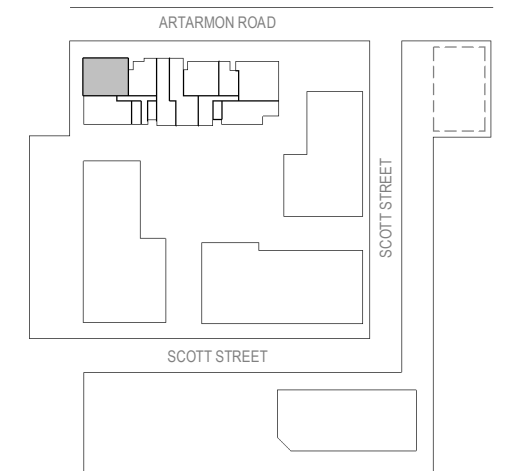
Strata Lot  
7

Colour Scheme: Premium A  
Floor Finish: Timber

**THREE BEDROOM + MEDIA APARTMENT**

Unit Area 120 m<sup>2</sup>  
Balcony Area 101 m<sup>2</sup>  
Total Area 221 m<sup>2</sup>

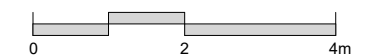
Areas subject to final survey. Area includes balcony, winter garden and courtyard where applicable. Area excludes associated parking and external storage areas.



Legend - As Applicable

- |                   |                              |            |
|-------------------|------------------------------|------------|
| ▲ Access          | F Fridge                     | J Joinery  |
| △ Balcony Access  | P Pantry                     | L Linen    |
| ** Sliding Screen | O Wall Oven                  | St Storage |
| * Fixed Screen    | Planting maintained by owner | Gravel     |

Provision of a water point, GPO (power point) and gas point has been made available to the balcony.



This floor plan was produced prior to construction and while the information contained herein is believed to be correct it is not guaranteed. Changes will undoubtedly be made in accordance with the contract for sale. The plan does not show additional features such as hot water systems, services, or Bulkheads necessary for services. Dimensions, areas, and scale of floor plans are approximate only and subject to the terms of the Contract. Areas calculated in accordance with the Strata Schemes Development Act 2015. The furniture and furnishings depicted are not included with any sale. Purchasers must refer to the contract for sale for the list of inclusions. Furnishings should not be taken to indicate the final position of power points, TV connection points and the like. All graphics, including design and extent of tile/paver/carpet areas, landscaping, balustrades, louvres, sun shading devices, privacy screens and services equipment are for illustrative purposes only and are not to be relied on as a representative of the final product. Plans do not show additional features within each lot such as letterboxes and side and rear retaining walls. All level changes in the courtyards may not have been shown.

Stratum Lot  
**3**

Colour Scheme: Premium A  
Floor Finish: Timber

Strata Lot  
**13**

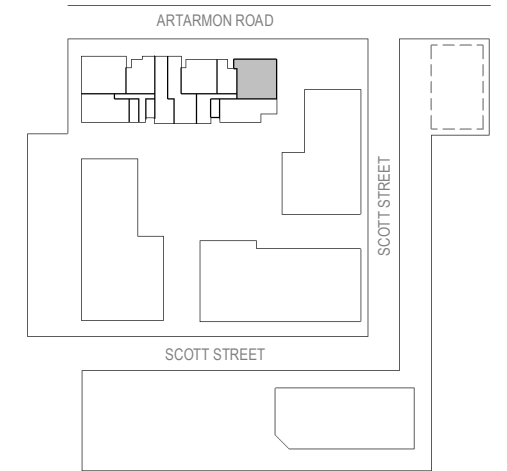
**THREE BEDROOM + MEDIA APARTMENT**

Unit Area 129 m<sup>2</sup>  
Balcony Area 14 m<sup>2</sup>  
Total Area 143 m<sup>2</sup>

Areas subject to final survey. Area includes balcony, winter garden and courtyard where applicable. Area excludes associated parking and external storage areas.



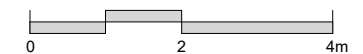
**LEVEL 2**



Legend - As Applicable

- |                   |             |            |
|-------------------|-------------|------------|
| ▲ Access          | F Fridge    | J Joinery  |
| △ Balcony Access  | P Pantry    | L Linen    |
| ** Sliding Screen | O Wall Oven | St Storage |
| * Fixed Screen    |             |            |

Provision of a water point, GPO (power point) and gas point has been made available to the balcony.



This floor plan was produced prior to construction and while the information contained herein is believed to be correct it is not guaranteed. Changes will undoubtedly be made in accordance with the contract for sale. The plan does not show additional features such as hot water systems, services, or Bulkheads necessary for services. Dimensions, areas, and scale of floor plans are approximate only and subject to the terms of the Contract. Areas calculated in accordance with the Strata Schemes Development Act 2015. The furniture and furnishings depicted are not included with any sale. Purchasers must refer to the contract for sale for the list of inclusions. Furnishings should not be taken to indicate the final position of power points, TV connection points and the like. All graphics, including design and extent of tile/paver/carpet areas, landscaping, balustrades, louvres, sun shading devices, privacy screens and services equipment are for illustrative purposes only and are not to be relied on as a representative of the final product. Plans do not show additional features within each lot such as letterboxes and side and rear retaining walls. All level changes in the courtyards may not have been shown.

Stratum Lot  
**3**

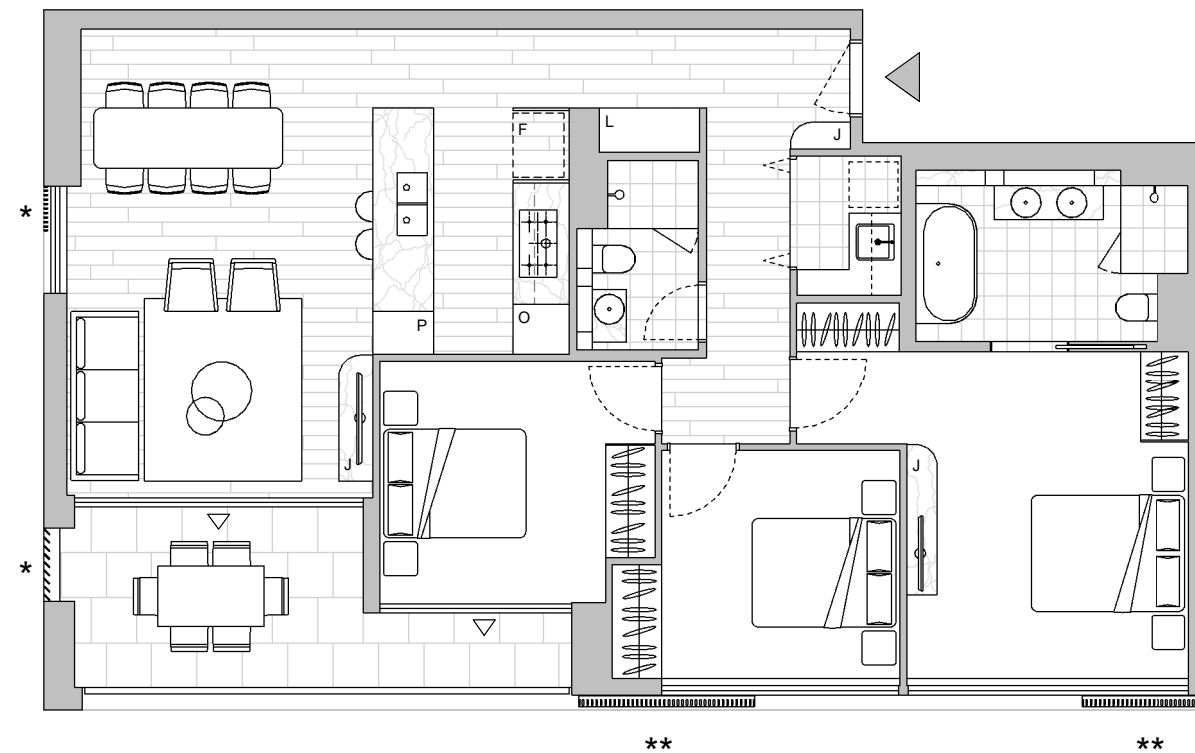
Colour Scheme: Premium A  
Floor Finish: Timber

Strata Lot  
**15**

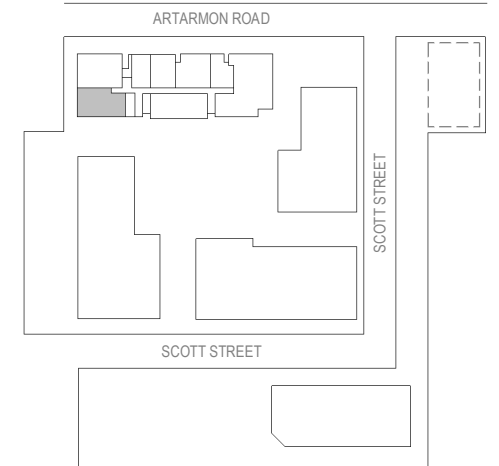
### THREE BEDROOM APARTMENT

Unit Area 104 m<sup>2</sup>  
Balcony Area 12 m<sup>2</sup>  
Total Area 116 m<sup>2</sup>

Areas subject to final survey. Area includes balcony, winter garden and courtyard where applicable. Area excludes associated parking and external storage areas.



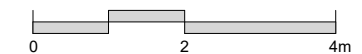
**LEVEL 3**



Legend - As Applicable

- |                   |             |            |
|-------------------|-------------|------------|
| ▲ Access          | F Fridge    | J Joinery  |
| △ Balcony Access  | P Pantry    | L Linen    |
| ** Sliding Screen | O Wall Oven | St Storage |
| * Fixed Screen    |             |            |

Provision of a water point, GPO (power point) and gas point has been made available to the balcony.



This floor plan was produced prior to construction and while the information contained herein is believed to be correct it is not guaranteed. Changes will undoubtedly be made in accordance with the contract for sale. The plan does not show additional features such as hot water systems, services, or Bulkheads necessary for services. Dimensions, areas, and scale of floor plans are approximate only and subject to the terms of the Contract. Areas calculated in accordance with the Strata Schemes Development Act 2015. The furniture and furnishings depicted are not included with any sale. Purchasers must refer to the contract for sale for the list of inclusions. Furnishings should not be taken to indicate the final position of power points, TV connection points and the like. All graphics, including design and extent of tile/paver/carpet areas, landscaping, balustrades, louvres, sun shading devices, privacy screens and services equipment are for illustrative purposes only and are not to be relied on as a representative of the final product. Plans do not show additional features within each lot such as letterboxes and side and rear retaining walls. All level changes in the courtyards may not have been shown.

Stratum Lot  
**3**

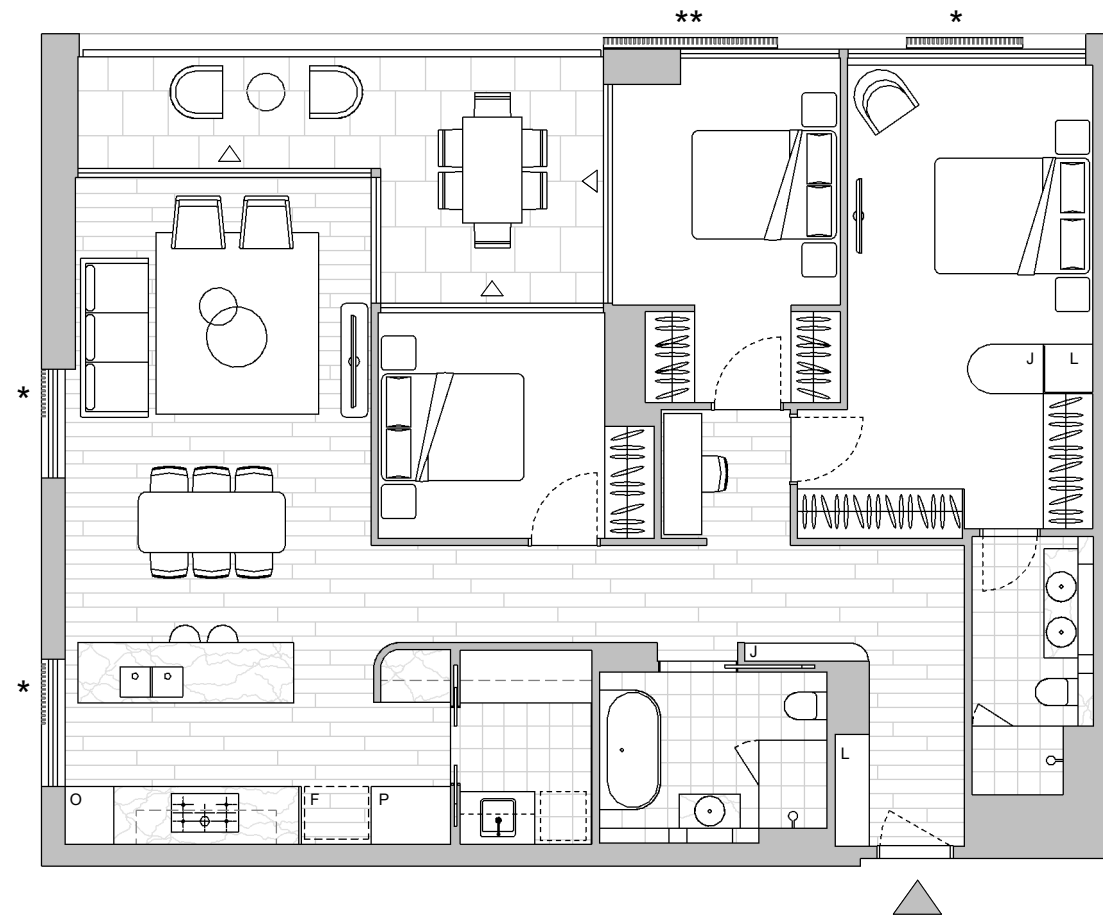
Colour Scheme: Premium C  
Floor Finish: Timber

Strata Lot  
**16**

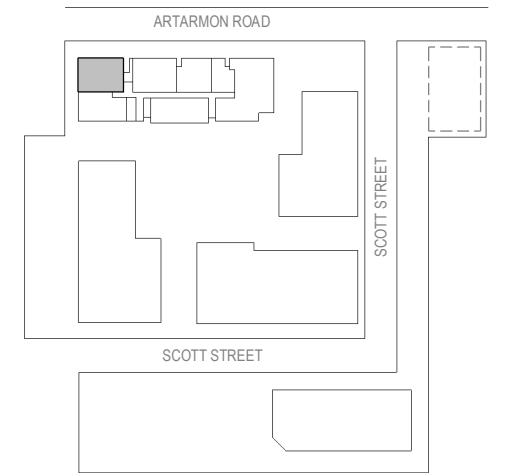
**THREE BEDROOM + MEDIA APARTMENT**

Unit Area 119 m<sup>2</sup>  
Balcony Area 16 m<sup>2</sup>  
Total Area 135 m<sup>2</sup>

Areas subject to final survey. Area includes balcony, winter garden and courtyard where applicable. Area excludes associated parking and external storage areas.



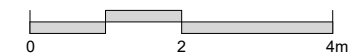
**LEVEL 3**



Legend - As Applicable

- |                   |             |            |
|-------------------|-------------|------------|
| ▲ Access          | F Fridge    | J Joinery  |
| △ Balcony Access  | P Pantry    | L Linen    |
| ** Sliding Screen | O Wall Oven | St Storage |
| * Fixed Screen    |             |            |

Provision of a water point, GPO (power point) and gas point has been made available to the balcony.



This floor plan was produced prior to construction and while the information contained herein is believed to be correct it is not guaranteed. Changes will undoubtedly be made in accordance with the contract for sale. The plan does not show additional features such as hot water systems, services, or Bulkheads necessary for services. Dimensions, areas, and scale of floor plans are approximate only and subject to the terms of the Contract. Areas calculated in accordance with the Strata Schemes Development Act 2015. The furniture and furnishings depicted are not included with any sale. Purchasers must refer to the contract for sale for the list of inclusions. Furnishings should not be taken to indicate the final position of power points, TV connection points and the like. All graphics, including design and extent of tile/paver/carpet areas, landscaping, balustrades, louvres, sun shading devices, privacy screens and services equipment are for illustrative purposes only and are not to be relied on as a representative of the final product. Plans do not show additional features within each lot such as letterboxes and side and rear retaining walls. All level changes in the courtyards may not have been shown.

Stratum Lot  
**3**

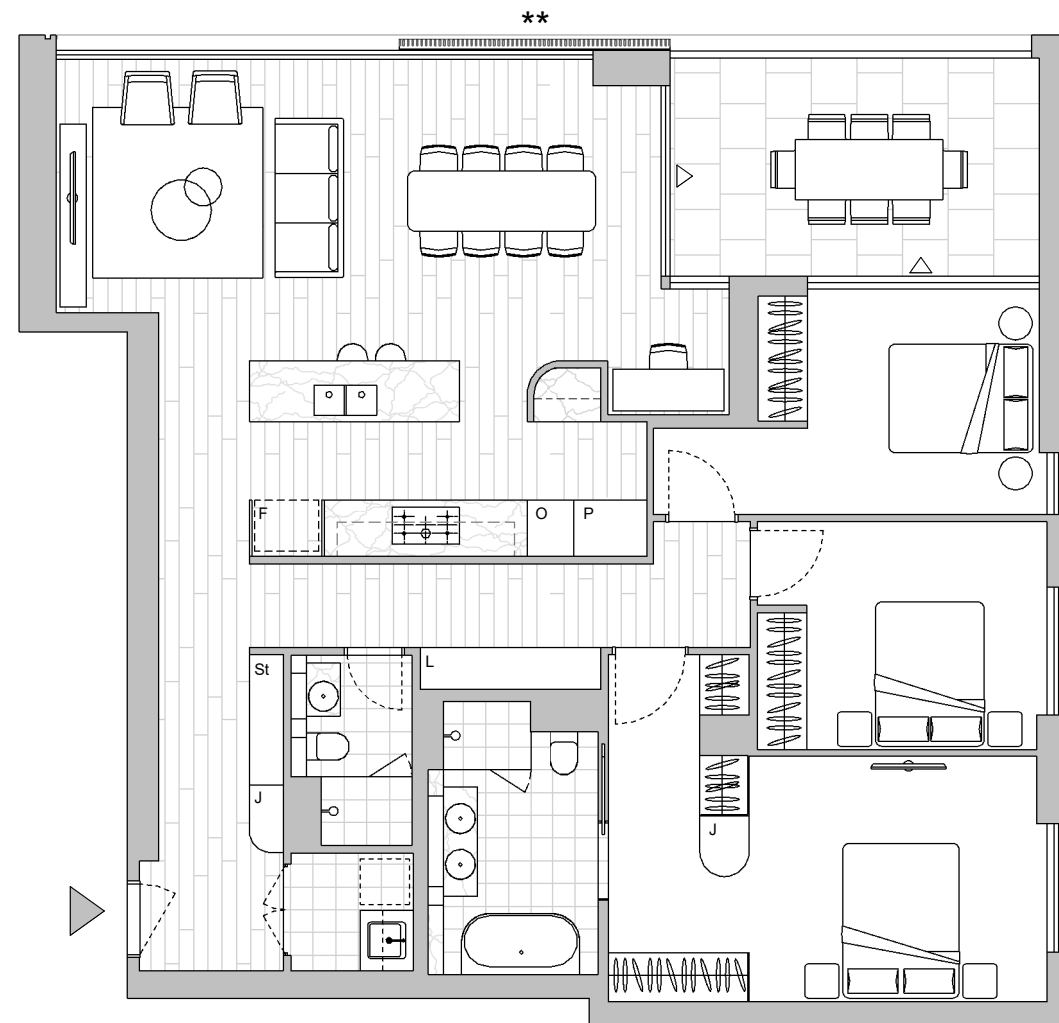
Colour Scheme: Premium C  
Floor Finish: Timber

Strata Lot  
**21**

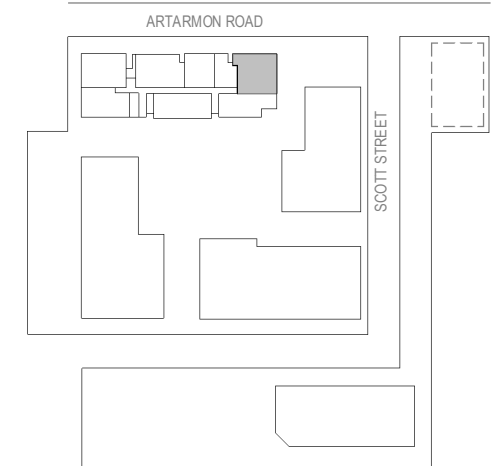
**THREE BEDROOM + MEDIA APARTMENT**

Unit Area 130 m<sup>2</sup>  
Balcony Area 14 m<sup>2</sup>  
Total Area 144 m<sup>2</sup>

Areas subject to final survey. Area includes balcony, winter garden and courtyard where applicable. Area excludes associated parking and external storage areas.



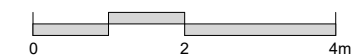
**LEVEL 3**



Legend - As Applicable

- |                   |             |            |
|-------------------|-------------|------------|
| ▲ Access          | F Fridge    | J Joinery  |
| △ Balcony Access  | P Pantry    | L Linen    |
| ** Sliding Screen | O Wall Oven | St Storage |
| * Fixed Screen    |             |            |

Provision of a water point, GPO (power point) and gas point has been made available to the balcony.



This floor plan was produced prior to construction and while the information contained herein is believed to be correct it is not guaranteed. Changes will undoubtedly be made in accordance with the contract for sale. The plan does not show additional features such as hot water systems, services, or Bulkheads necessary for services. Dimensions, areas, and scale of floor plans are approximate only and subject to the terms of the Contract. Areas calculated in accordance with the Strata Schemes Development Act 2015. The furniture and furnishings depicted are not included with any sale. Purchasers must refer to the contract for sale for the list of inclusions. Furnishings should not be taken to indicate the final position of power points, TV connection points and the like. All graphics, including design and extent of tile/paver/carpet areas, landscaping, balustrades, louvres, sun shading devices, privacy screens and services equipment are for illustrative purposes only and are not to be relied on as a representative of the final product. Plans do not show additional features within each lot such as letterboxes and side and rear retaining walls. All level changes in the courtyards may not have been shown.

Stratum Lot  
**3**

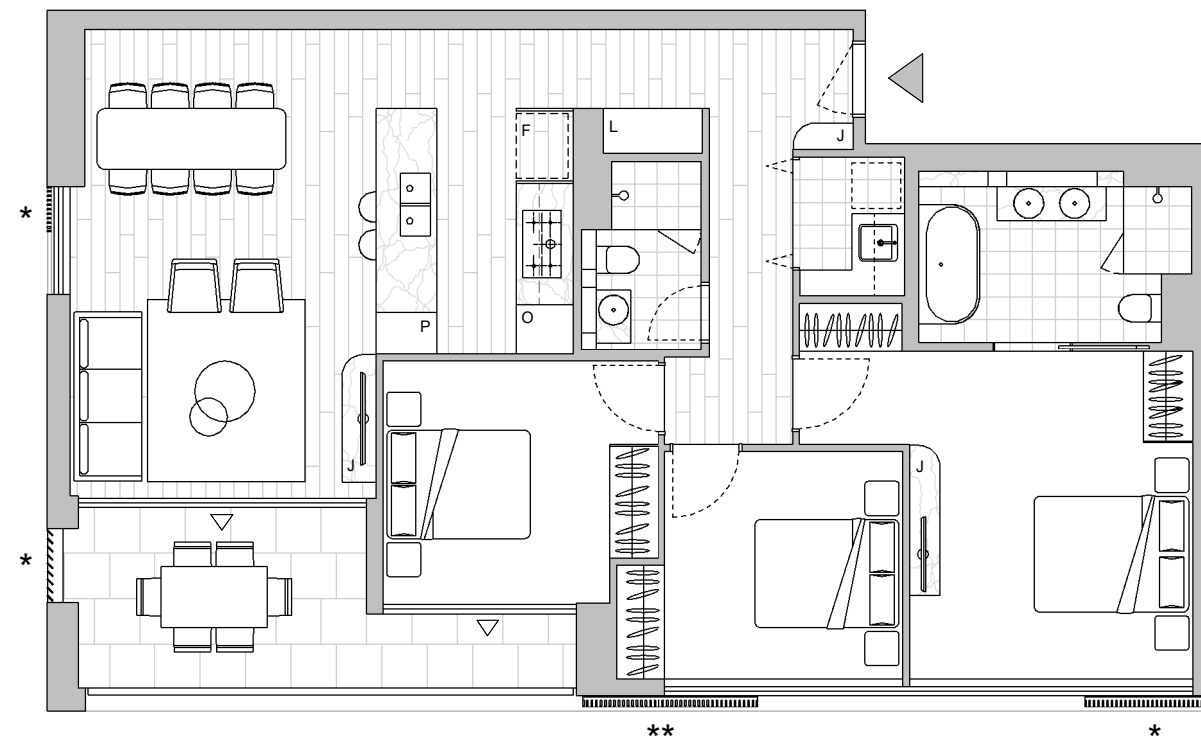
Colour Scheme: Premium B  
Floor Finish: Timber

Strata Lot  
**24**

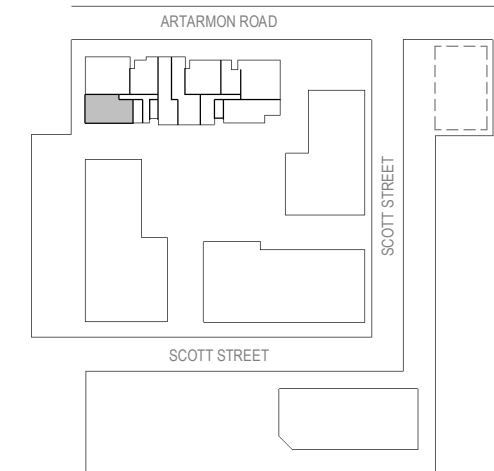
### THREE BEDROOM APARTMENT

Unit Area 104 m<sup>2</sup>  
Balcony Area 12 m<sup>2</sup>  
Total Area 116 m<sup>2</sup>

Areas subject to final survey. Area includes balcony, winter garden and courtyard where applicable. Area excludes associated parking and external storage areas.



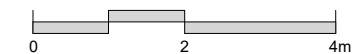
**LEVEL 4**



Legend - As Applicable

- |                   |             |            |
|-------------------|-------------|------------|
| ▲ Access          | F Fridge    | J Joinery  |
| △ Balcony Access  | P Pantry    | L Linen    |
| ** Sliding Screen | O Wall Oven | St Storage |
| * Fixed Screen    |             |            |

Provision of a water point, GPO (power point) and gas point has been made available to the balcony.



This floor plan was produced prior to construction and while the information contained herein is believed to be correct it is not guaranteed. Changes will undoubtedly be made in accordance with the contract for sale. The plan does not show additional features such as hot water systems, services, or Bulkheads necessary for services. Dimensions, areas, and scale of floor plans are approximate only and subject to the terms of the Contract. Areas calculated in accordance with the Strata Schemes Development Act 2015. The furniture and furnishings depicted are not included with any sale. Purchasers must refer to the contract for sale for the list of inclusions. Furnishings should not be taken to indicate the final position of power points, TV connection points and the like. All graphics, including design and extent of tile/paver/carpet areas, landscaping, balustrades, louvres, sun shading devices, privacy screens and services equipment are for illustrative purposes only and are not to be relied on as a representative of the final product. Plans do not show additional features within each lot such as letterboxes and side and rear retaining walls. All level changes in the courtyards may not have been shown.



Stratum Lot  
**3**

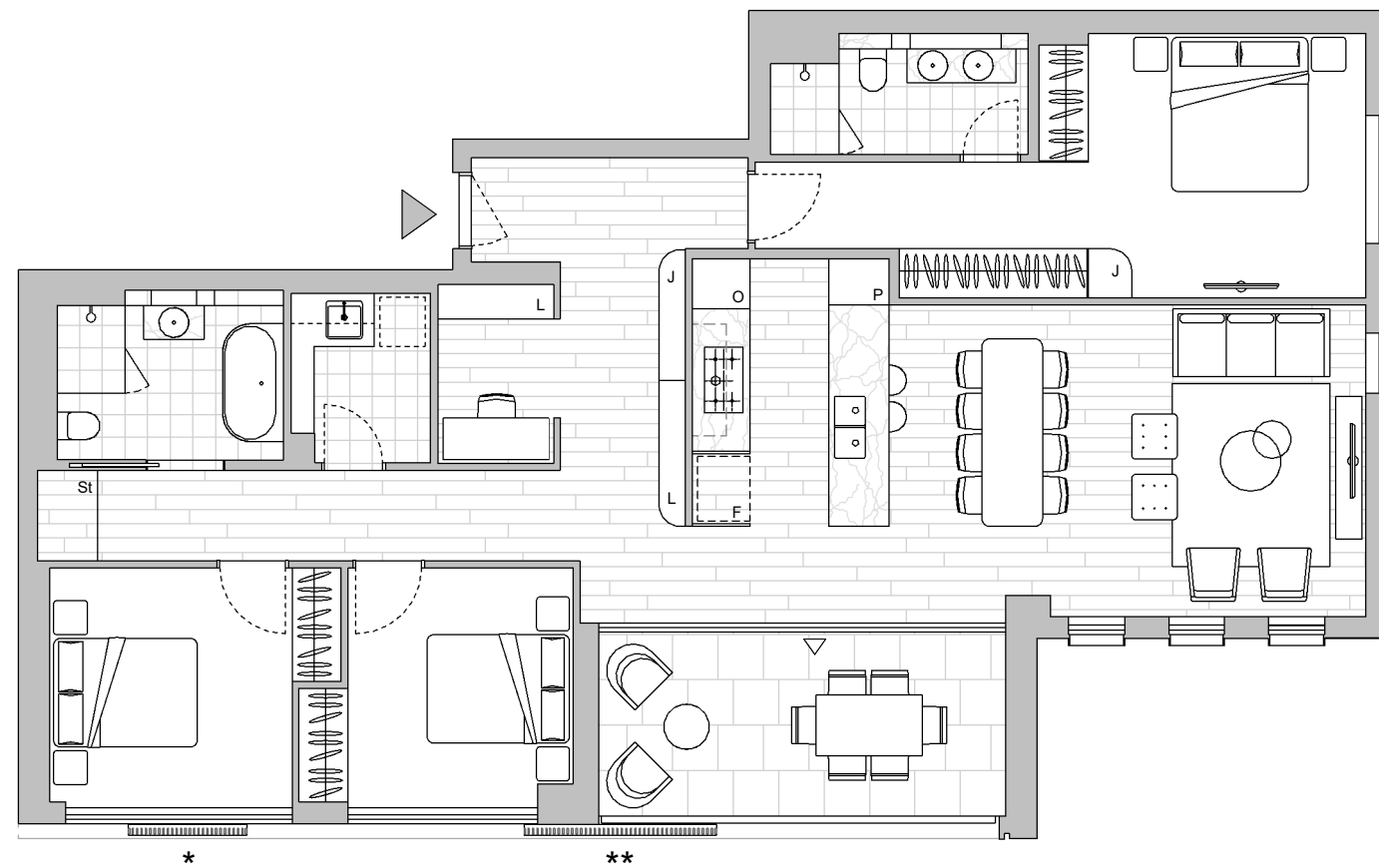
Colour Scheme: Premium C  
Floor Finish: Timber

Strata Lot  
**31**

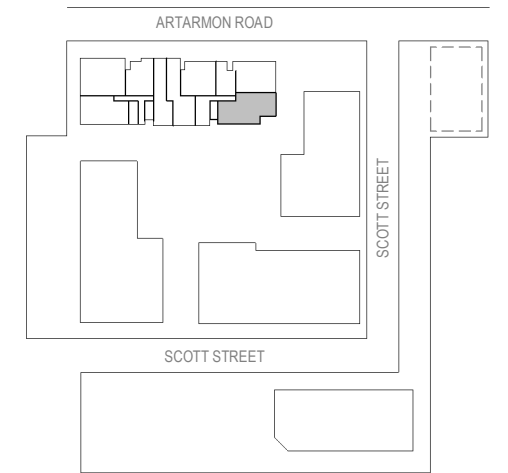
**THREE BEDROOM + MEDIA APARTMENT**

Unit Area 125 m<sup>2</sup>  
Balcony Area 13 m<sup>2</sup>  
Total Area 138 m<sup>2</sup>

Areas subject to final survey. Area includes balcony, winter garden and courtyard where applicable. Area excludes associated parking and external storage areas.



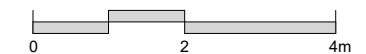
**LEVEL 4**



Legend - As Applicable

- |                   |             |            |
|-------------------|-------------|------------|
| ▲ Access          | F Fridge    | J Joinery  |
| △ Balcony Access  | P Pantry    | L Linen    |
| ** Sliding Screen | O Wall Oven | St Storage |
| * Fixed Screen    |             |            |

Provision of a water point, GPO (power point) and gas point has been made available to the balcony.



This floor plan was produced prior to construction and while the information contained herein is believed to be correct it is not guaranteed. Changes will undoubtedly be made in accordance with the contract for sale. The plan does not show additional features such as hot water systems, services, or Bulkheads necessary for services. Dimensions, areas, and scale of floor plans are approximate only and subject to the terms of the Contract. Areas calculated in accordance with the Strata Schemes Development Act 2015. The furniture and furnishings depicted are not included with any sale. Purchasers must refer to the contract for sale for the list of inclusions. Furnishings should not be taken to indicate the final position of power points, TV connection points and the like. All graphics, including design and extent of tile/paver/carpet areas, landscaping, balustrades, louvres, sun shading devices, privacy screens and services equipment are for illustrative purposes only and are not to be relied on as a representative of the final product. Plans do not show additional features within each lot such as letterboxes and side and rear retaining walls. All level changes in the courtyards may not have been shown.